

Multifunction Defibrillator Pads

Product information



Innovative solutions in resuscitation therapy

With pads for emergency use, monitoring, as well as special procedures, there are HeartStart Pads sized and designed for a wide variety of environments, caregivers, treatments, and patients.

When connected to a manual defibrillator with advanced capabilities, HeartStart multifunction pads can provide ECG monitoring, external pacing, synchronized cardioversion, defibrillation, and ventilation detection when used with the Q-CPR™

measurement and feedback option on Philips HeartStart MRx monitor/defibrillator. The pads are easy to use, compliant with internationally-recognized standards, and optimized for Philips defibrillators. Most models are compatible with defibrillators from other manufacturers using Philips HeartStart Pads Adapters. These adapters provide simple inter-connectivity and allow for easy standardization of pads, whether defibrillators are biphasic or monophasic, manual or automated.

HeartStart pads for emergency and general use

Adult pads

- For patients above 22 pounds (10kg) using manual defibrillators or 55 pounds (25kg) using AEDs
- Conductor surface area 75 cm² and gel surface area 102 cm²
- Multifunction – defibrillation, pacing, monitoring, and cardioversion
- Hydro-gel thickness and adhesion suited for emergency situations
- Long shelf life



HeartStart Adult Plus Pads (M3713A)

- General purpose pads
- Designed primarily for manual defibrillator use, and compatible with AEDs
- Package and instructions optimized for ACLS-trained responders
- 48" lead wire. Requires hands-free cable, when connected to a manual defibrillator
- Packed 10/case

HeartStart Adult AED Pads (DP2/DP6)

- General purpose pads
- Designed primarily for AED use
- Package and instructions optimized for infrequent users, but suitable for both BLS- and ACLS-trained responders
- 48" lead wire. Requires hands-free cable, when connected to a manual defibrillator
- Wide storage temperature range
- DP2 packed 2/case and DP6 packed 6/case

Philips Adult Pads (M3501/2A)

- General purpose, multifunction pads
- Connector enables use with CodeMaster defibrillators. No adapter required
- 48" lead wire. Requires hands-free cable, when connected to a manual defibrillator
- Packed 10/case

Rugged and dependable

Constructed of a thin flexible conductor sandwiched between a protective polymer backing and hydro-gel, Philips pads withstand the rigors of CPR

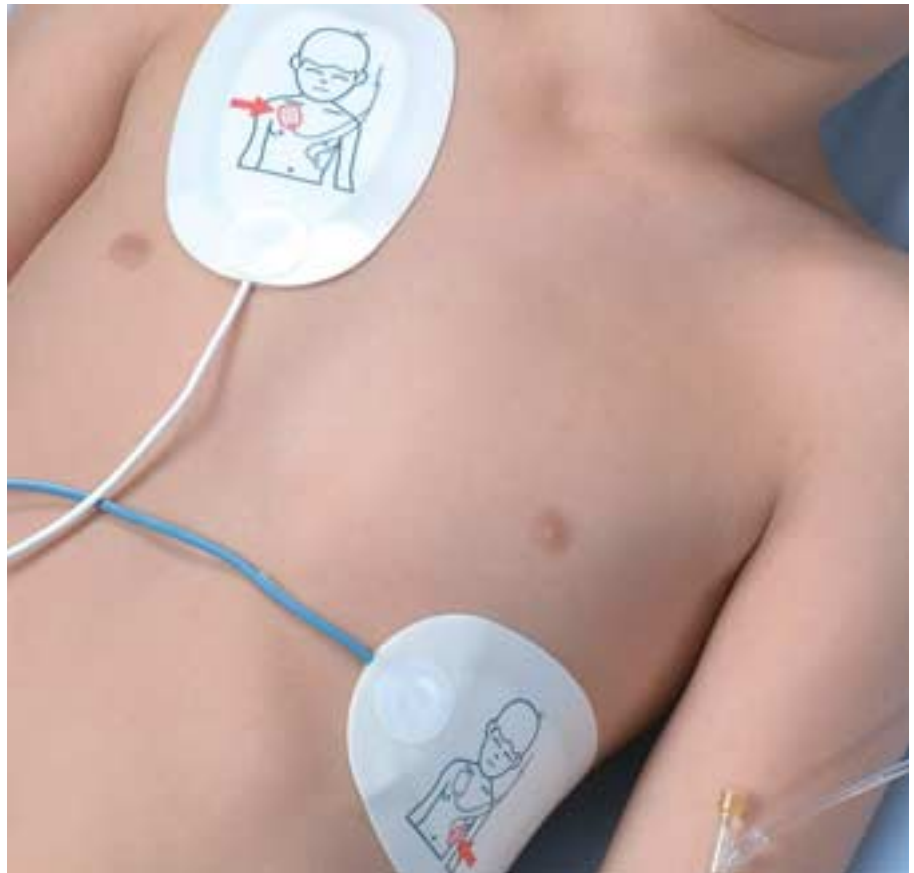


Low-profile pad conforms to the body's contours for proper current distribution



Pediatric pads

- Specially formulated gel hydrates skin, yet provides adhesion suitable for emergency situations
- Pads sized for pediatric patients – conductor surface area 32 cm² and gel surface area 44 cm²
- Recommended anterior-posterior placement depicted on pads' outer surface
- Long shelf life



HeartStart Pediatric Plus Pads (M3717A)

Multifunction pads designed only for use with manual defibrillators, in manual mode.

- General purpose pads
- For use on smaller patients, weighing less than 22 pounds (10 kg)
- Multifunction – defibrillation, pacing, monitoring, and synchronized cardioversion
- Not to be used in AED mode or with AEDs. Special connector precludes use with Heartstream and HeartStart AEDs
- Package and instructions optimized for ACLS-trained responders
- 24" lead wire. Requires hands-free cable.
- Packed 5/case

Philips Pediatric Pads (M3503/4A)

- General purpose, multifunction pads
- 24" lead wire. Requires hands-free cable.
- Connector enables use with CodeMaster defibrillators. No adapter required
- Not to be used in AED mode or with AEDs

HeartStart FR2 Infant/Child Reduced-energy Defibrillation Pads (M3870A)

Defibrillation pads designed only for use with FR2 and FR2+ automated defibrillators.

- Unique bear-shaped connector enables users to distinguish the pads
- 48" lead wire
- Pad circuitry attenuates delivered shock of 50 Joules for use on patients under 8 years of age or 55 pounds (25 kg)
- Package and instructions optimized for infrequent users, but suitable for both BLS- and ACLS-trained responders
- Wide storage temperature range
- Packed 1/case



HeartStart pads for special procedures and environments

Specialty pads

- Optimized uses – radiological procedures in the catheterization lab, electrophysiology lab, critical care unit, emergency department, telemetry, and step-down cardiac unit
- Multifunction – defibrillation, pacing, monitoring, and synchronized cardioversion
- Package and instructions optimized for ACLS-trained caregivers

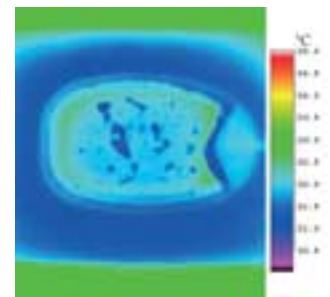
HeartStart Radiotransparent/ Reduced Skin Irritation Pads

- Special purpose pads ideal for procedures requiring maximum visibility.
- Completely transparent pad under typical X-ray levels
- Thick gel layer provides improved patient contact
- Hydro-gel with high water content allows for easier pad removal, excellent skin hydration, and reduced skin irritation. Optimized for Philips defibrillators featuring patented low-energy SMART Biphasic waveform
- Hydrophilic properties allow electrode to perform under diaphoretic conditions
- Adhesive properties prevent pad migration
- Buffers minimize skin irritation by neutralizing changes in pH conditions produced during pacing
- Electrolytes enhance the electrical properties in pacing and defibrillation

Adult (M3718A)

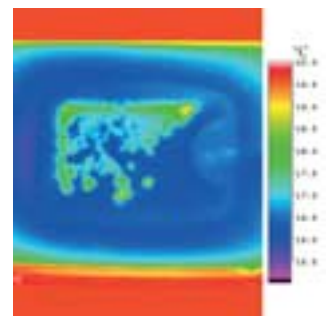
- For use on patients above 22 pounds (10 kg) when used with a manual defibrillator
- Conductor surface area and gel surface area are 97 cm²
- 48" lead wire requires hands-free cable, when connected to a manual defibrillator
- Packed 10/case

Thermal distribution after defibrillation



HeartStart Radiotransparent/ Reduced Skin Irritation Pads

Proprietary electrode pattern reduces edge effect of current flow



Other Manufacturer's Pads



Pediatric (M3719A)

- For use on smaller patients, weighing less than 22 pounds (10 kg)
- Conductor surface area and gel surface area are 50 cm²
- 24" lead wire
- Not to be used in AED mode. Special connector precludes use with Heartstream and HeartStart automated defibrillators
- Packed 5/case



HeartStart Adult Radiolucent Pads (M3716A)

Suitable for patients who will likely require chest X-rays.

- Multifunction - defibrillation, pacing, monitoring, cardioversion, and ventilation monitoring during CPR
- Pad casts slight shadow under typical adult X-ray levels
- Moist, long-lasting hydro-gel with 50% more water content than HeartStart Adult Plus pads, yet provides adhesion suitable for emergency situations
- Package and instructions optimized for ACLS-trained responders
- 48" lead wire requires hands-free cable, when connected to a manual defibrillator
- Indicated for patients above 22 pounds (10 kg), when used with a manual defibrillator
- Packed 10/case



HeartStart Adult Radiolucent Pads

Pad casts slight shadow under typical adult X-ray levels



HeartStart Radiotransparent/Reduced Skin Irritation Pads

Completely transparent pad under typical adult X-ray levels



Philips Pads Multifunction Defibrillator Electrodes

Technical Specifications

Clear, concise labeling on the package and pads guides experienced and infrequent caregivers alike through pad selection, placement, and connection.



	HeartStart Adult AED Pads	Philips Adult Pads	Philips Pediatric Pads	HeartStart Adult Plus Pads
Product Number	DP2/6	M3501/2A	M3503/4A	M3713A
Number of pads per case	2 or 6	10	5	10
Indications	External pacing, defibrillation, monitoring, cardioversion, ventilation detection	External pacing, defibrillation, monitoring, cardioversion	External pacing, defibrillation, monitoring, cardioversion	External pacing, defibrillation, monitoring, cardioversion, ventilation detection
Conductor surface area (cm²)	75	75	32	75
Gel surface area (cm²)	102	102	44	102
Lead wire length (inches)	48	24	24	48
Number of hours on skin	24	24	24	24
Number of shocks	150	150	150	150
Duration of pacing (hours) at 100mA, 80 bmp	8	8	8	8
Temperature range for storage (Celsius/Fahrenheit)	0-43°C 32°-109°F	15°-35°C 59°-95°F	15°-35°C 59°-95°F	15°-35°C 59°-95°F
Shelf life from date of manufacture (months)*	24	24	24	24
Package dimensions (inches/cm)	8.88x6.25 22.55x15.88	9.37x6.25 23.81x15.88	7.63x6.25 19.38x15.88	8.88x6.25 22.55x15.88
Type of connector	Plug-style	CodeMaster barrel	CodeMaster barrel	Plug-style
Philips Adapter compatibility	05-10000,05-10100, 05-10200	N/A	N/A	05-10000,05-10100, 05-10200
Other			Not for use with AEDs or in AED mode	

* Shelf life will be less, upon receipt.

Adapters

To facilitate connection of Philips HeartStart Pads to other defibrillators in your facility, we offer HeartStart Adapters. A built-in tether secures the adapter to the defibrillator's hands-free cable, ensuring its presence when needed.

Adapters are available for connecting HeartStart Pads, excluding the FR2 Pediatric Defibrillation Pads, to the devices listed below.

Model 05-10200

Adapter fits Philips hands-free cables M3507A or M1750A/B for connection to Hewlett-Packard CodeMaster 100, XE, XL, and XL+; Agilent Heartstream/Philips HeartStart XL and XLT; Philips HeartStart MRx; and Laerdal Heartstart 4000 defibrillator/monitors



HeartStart Adult Radiolucent Pads



M3716A

10

External pacing, defibrillation, monitoring, cardioversion, ventilation detection

75

102

48

24

150

8

15°-35°C
59°-95°F

24

8.88x6.25
22.55x15.88

Plug-style

05-10000,05-10100,
05-10200

HeartStart Pediatric Plus Pads



M3717A

5

External pacing, defibrillation, monitoring, cardioversion

32

44

24

24

150

8

15°-35°C
59°-95°F

24

9.63x6.25
24.46x15.88

Plug-style with shroud

05-10000,05-10100,
05-10200

Not for use with AEDs
or in AED mode

HeartStart Adult Radiotransparent/Reduced Skin Irritation Pads



M3718A

10

External pacing, defibrillation, monitoring, cardioversion, ventilation detection

97

97

48

24

50

3

15°-35°C
59°-95°F

24

8.88x6.25
22.55x15.88

Plug-style

05-10000,05-10100,
05-10200

HeartStart Pediatric Radiotransparent/Reduced Skin Irritation Pads



M3719A

5

External pacing, defibrillation, monitoring, cardioversion

50

50

24

24

50

1.5

15°-35°C
59°-95°F

24

8.00x8.00
20.32x20.32

Plug-style with shroud

05-10000,05-10100,
05-10200

Not for use with AEDs
or in AED mode

HeartStart FR2 Pediatric AED Pads



M3870A

1

Defibrillation

32

44

48

24

50

N/A

0°-43°C
32°-109°F

24

10.50x6.25
26.67x15.88

Plug-style with attenuator and rib

N/A

For use only with
FR2 and FR2+ AEDs

Model 05-10000

Removable adapter for Medtronic Physio-Control Quik-Combo LifePak 9, 10C, 11, 12, 20 and 500 defibrillators



Model 05-10100

Removable adapter for Zoll 1200, 1400, 1600 and M-Series defibrillators



Pace, monitor, cardiovert, and defibrillate with a single pad family, as HeartStart Adapters work with many popular defibrillators. When transferring a patient from one defibrillator to another, simply plug the pad connector into the HeartStart Adapter, then plug the adapter into your defibrillator's hands-free cable. (Note: the standard plug-style connector fits Philips HeartStart hands-free cable, model M3508A; no adapter necessary.)



Philips—The trusted choice

- One of the world's largest medical products companies with annual revenue of over \$6 billion
- History of innovation. Philips introduced the medical X-ray tube in 1918, the audiocassette in 1963, and the first VCR; the company also created CD-ROM technology
- With over 200,000 automated external defibrillators installed, Philips has more AEDs on the job, in the air, in the classroom and in your neighborhood than anyone else
- Over 4.5 billion HeartStart Defibrillator service hours logged, with an additional 2.7 million hours added every day
- Over 17 % of Fortune 1000 companies, 8 out of 10 major airlines and 43 professional sports teams rely on Philips HeartStart Defibrillators
- The first defibrillator cleared for over-the-counter use — HeartStart Home Defibrillator

Philips Medical Supplies

Philips is committed to producing and supporting the finest quality medical equipment and supplies. Our supplies are thoughtfully designed, tested and manufactured to deliver reliable and accurate results from your HeartStart MRx. For a complete list of supplies, please visit <http://shop.medical.philips.com>.

Philips Medical Systems is part of Royal Philips Electronics

On the web

www.philips.com/heartstart

Via email

medical@philips.com

By fax

+31 40 27 64 887

By postal service

Philips Medical Systems
3000 Minuteman Road
Andover, MA 01810-1085

Asia

Tel: +852 2821 5888

Europe, Middle East, Africa

Tel: +31 40 27 87246

Latin America

Tel: +1 954 628 1000

North America

Tel: +1 800 934 7372

© Koninklijke Philips Electronics N.V. 2005
All rights are reserved. Reproduction in whole or in part is prohibited without the prior written consent of the copyright holder.

Philips is a registered trademark of Koninklijke Philips Electronics N.V.

Philips Medical Systems North America Corporation reserves the right to make changes in specifications or to discontinue any product at any time without notice or obligation and will not be liable for any consequences resulting from the use of this publication.

Printed in The Netherlands.
4522 962 08121/861 * NOV 2005